

# HMI elite

## The Future of CNC Customization

New revitalized **multiplatform** HMI based on **HTML5** technology

### Customizable HMI with Web-Based Development

- Full access to CNC and drive data
- Third-party MES connectivity
- **Multiple machine monitoring** through PC, mobile devices, and tablets

< html >



Web  
technology

Windows

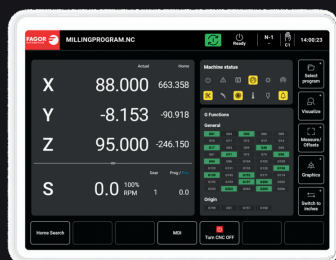
Linux



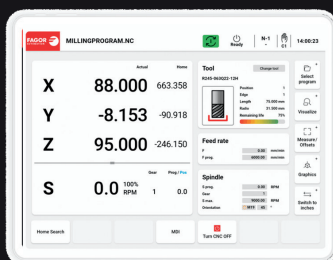
Android

iOS

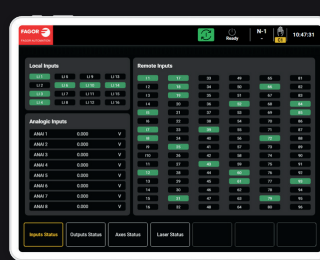
Responsive



Page Zones



Aesthetic Themes



Whole Pages



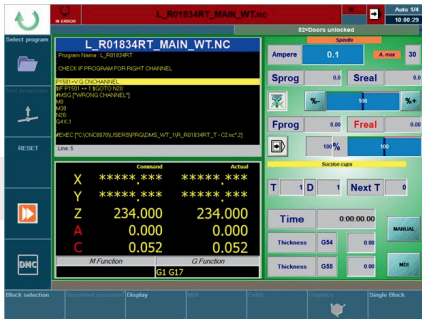
Custom Warnings & Errors

# Create screens for any application

**FAGOR**  
AUTOMATION

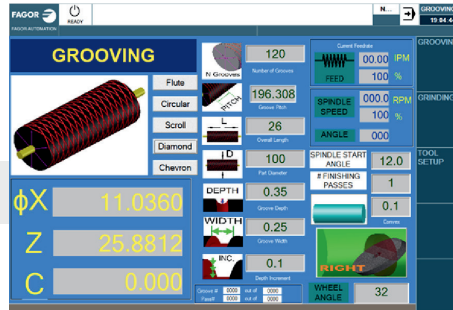


Open  
to your  
world



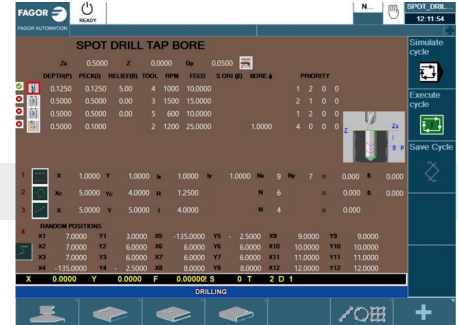
**Stone Cutting**  
*Custom Interface*

This screen replaces the default stock screen showing data related to stone cutting (loads of the spindle, status of suction cups, thickness of stone etc.), while ensuring compatibility with touch screen interface



**Roll Grinding**  
*Custom Cycles*

Choose groove patterns like Flute, Circular, Chevron, and Diamond, and customize parameters such as grooves, pitch, length/diameter, and other roll-making settings using intuitive on-screen images.



**Machining Center**  
*Custom Tool Table*

This customized screen allows to set priorities. Operations using the same tool can be combined together before calling up another tool. This saves tool change time in between various operations.



## Case Study Digital Dental

Digital Dental launched the DM5XT Zirconia Mill, which cuts teeth aligners by scanning bar codes to download g-code from the cloud. Collaborating with Fagor Automation, they integrated the Optima CNC System with 100MBps servo drives, allowing for custom, user-friendly HMI screens for various operations, all designed for touch screen use.



**Machine Status**  
*Custom Screen*



**Remaining Tool Life**  
*Custom Screen*

**Fagor Automation Corp.**  
4020 Winnetka Avenue  
Rolling Meadows, IL 60008

T. 847-981-1500  
service@fagor-automation.com

[www.fagorautomation.com/en-us/](http://www.fagorautomation.com/en-us/)

